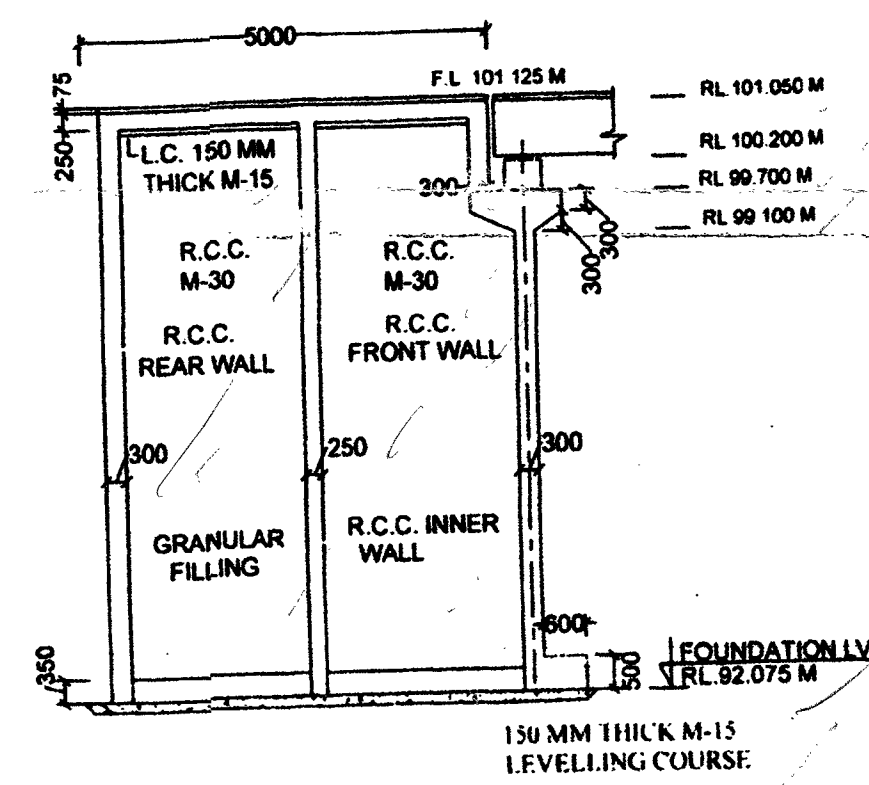
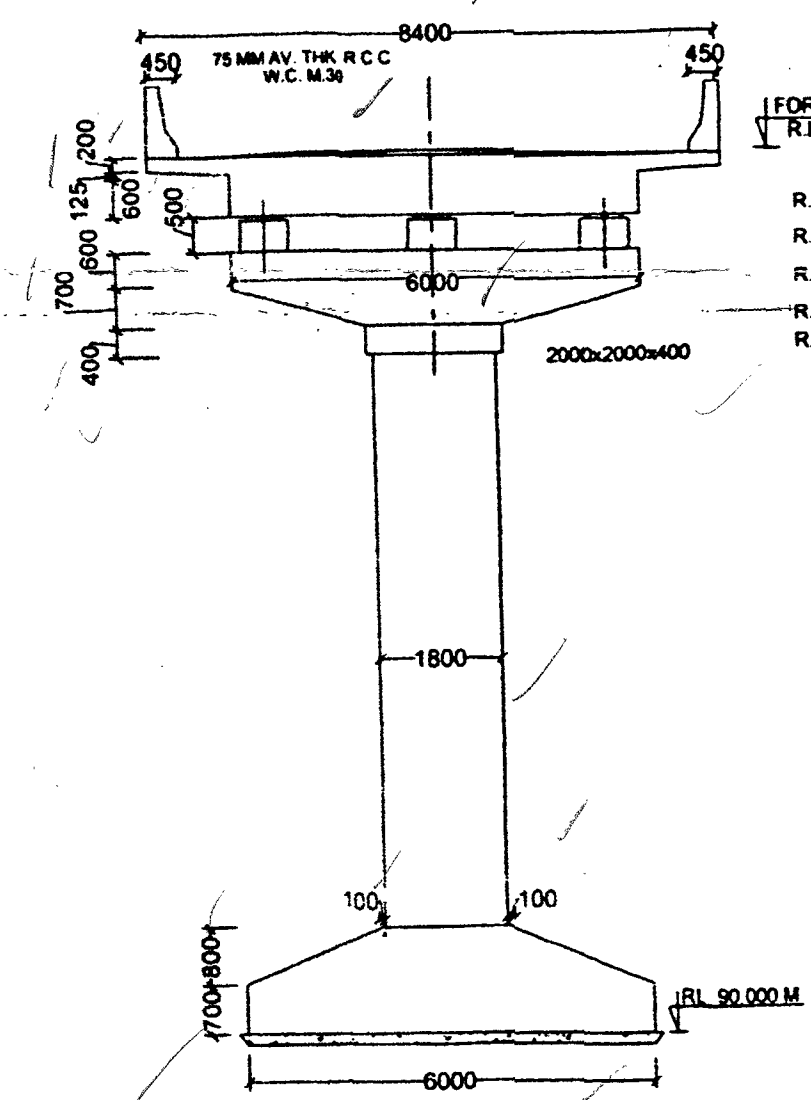


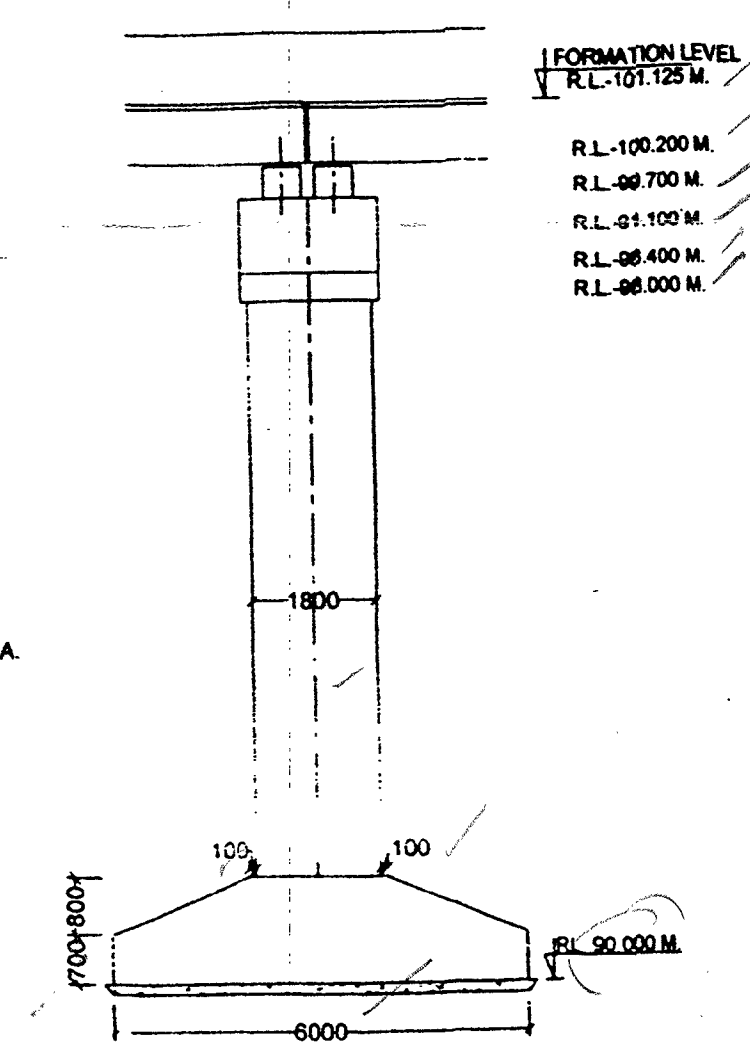
DATUM - 85.00 M.	CHAINAGE	GROUND LEVEL
	0+00	97.580
	0+15	97.470
	0+30	97.720
	0+45	97.880
	0+60	98.600
	0+75	93.630
	0+90	93.330
	1+05	93.080
	1+20	93.270
	1+35	93.280
	1+50	93.580
	1+65	93.680
	1+80	97.330
	1+95	97.095
	2+10	97.575
	2+25	97.675
	2+40	97.675
	2+55	97.675
	2+70	97.675
	2+85	97.675
	3+00	97.675



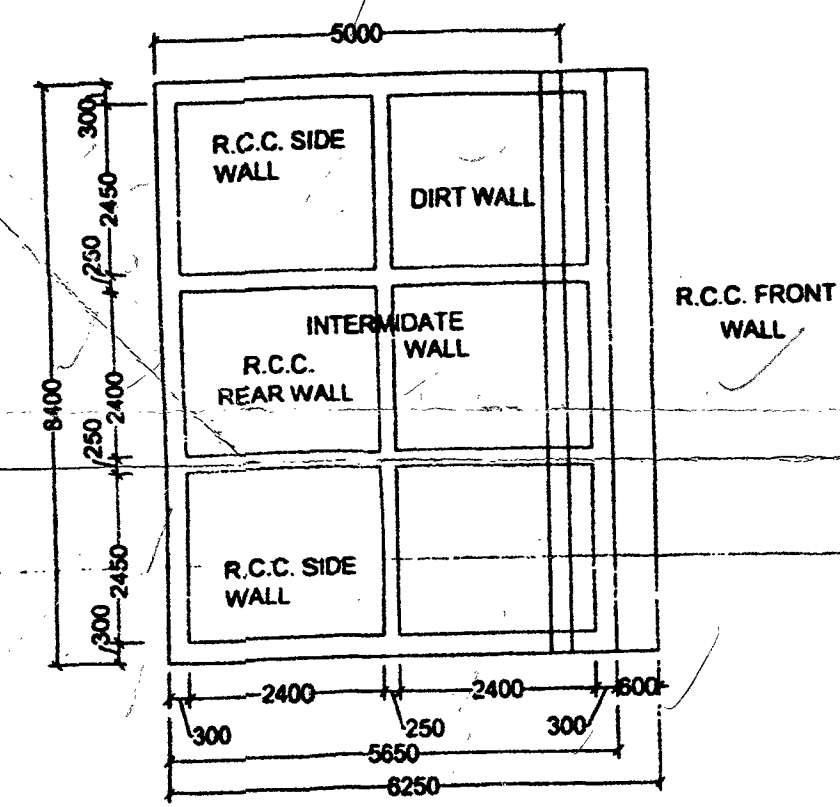
ELEVATION OF ABUTMENT



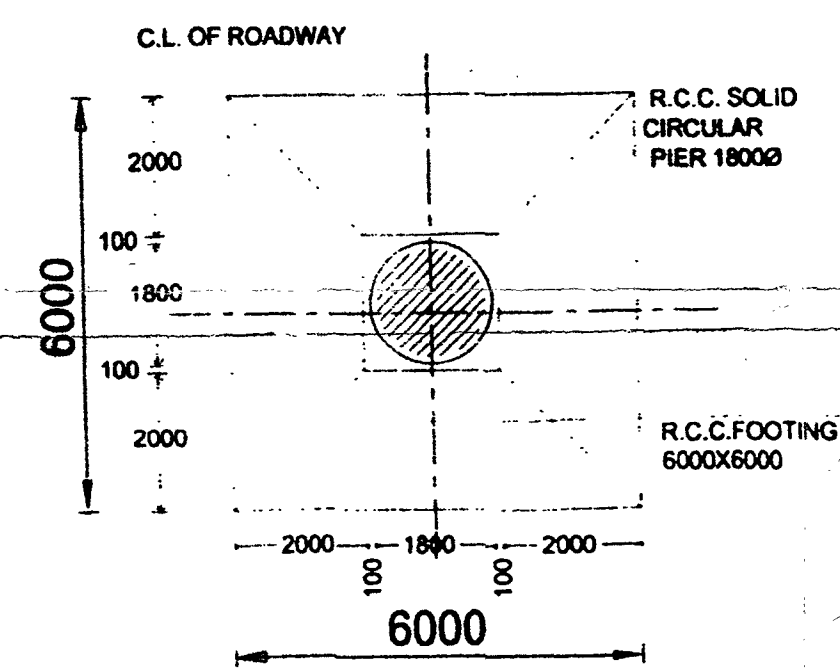
FRONT ELEVATION OF PIER



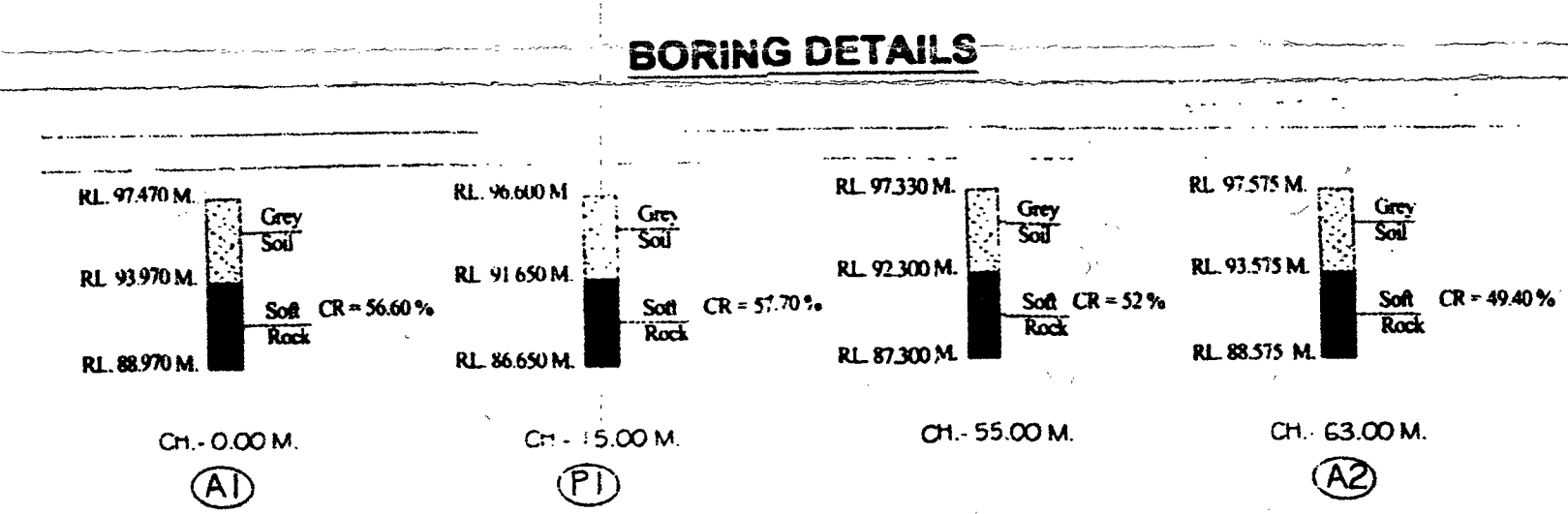
SIDE ELEVATION OF PIER



PLAN OF ABUTMENT



PLAN OF PIER & FOOTING



NOTE:- CERTIFIED THAT BORING HAS BEEN DONE AT SHOW LOCTION & BORE DATA SHOW IS CORRECT.

- NOTES**
- TYPE OF BRIDGE HIGH LEVEL
 - LENGTH OF BRIDGE 60.00 M (04 SPANS @ 15.000 M. C/C EACH)
 - OVER ALL WIDTH 8.40 M.
 - CLEAR WIDTH 7.50 M.
 - FORMATION LEVEL R.L. 101.125 M.
 - SOFFIT LEVEL R.L. 100.200 M.
 - H.F.L. R.L. 98.850 M.
 - L.W.L. R.L. 96.580 M.
 - DESIGN DISCHARGE 854.177 CUMECs
 - DESIGN VELOCITY 2.480 M/SEC.
 - CATCHMENT AREA 295 SQK.M.
 - SCOUR LEVEL
 - FOUNDATION LEVEL
 - ABUTMENT - R.L. 93.565 M. OR ROCK WHICHEVER IS HIGHER.
PIER - R.L. 90.565 M. OR ROCK WHICHEVER IS HIGHER.
 - TYPE OF FOUNDATION - OPEN FOUNDATION
 - TYPE OF SUB STRUCTURE
 - PIERS - R.C.C. SOLID CIRCULAR PIER
ABUTMENT - R.C.C. BOX TYPE
 - TYPE OF SUPER STRUCTURE - R.C.C. SOLID SLAB.
 - EXPANSION JOINT - STRIP SEAL EXPANSION JOINT
 - R.C.C. CRASH BARRIER, APPROACH SLAB, DRAINAGE SPOUT, WEARING COAT AS PER STD. DRG.
 - TYPE OF BEARING - ELASTOMERIC BEARING
 - DESIGN LOADING - ONE LANE CLASS 70R OR TWO LANE OF CLASS 'A' LOADING WHICHEVER PRODUCES SEVERE EFFECT AS PER IRC 6:2017
 - SAFE BEARING CAPACITY - 40.00 T/M²
 - TOTAL LENGTH OF APPROACH ROAD - 132.00 M.
i) CHHATAN SIDE = 55.50 M.
ii) MOHDANDA SIDE = 76.50 M.
 - THIS DRAWING IS ONLY FOR ESTIMATE PURPOSE. SEPARATE DRAWING WILL BE FOLLOWED FOR EXECUTION.

OFFICE OF THE EXECUTIVE ENGINEER P.W.D. BRIDGE CONSTRUCTION DIVISION BILASPUR (C.G.)			
S.D.O.	E.E.	S.E.	C.E.
TITEL			
GENERAL ARRANGEMENT DRAWING			
CONSTRUCTION OF H.L. BRIDGE & APPROACHES ACROSS AGAR RIVER ON CHHATAN - MOHDANDA ROAD.			
SUB ENG.	DRG. NO.	AGAR RIVER / GAD - 2024-25	